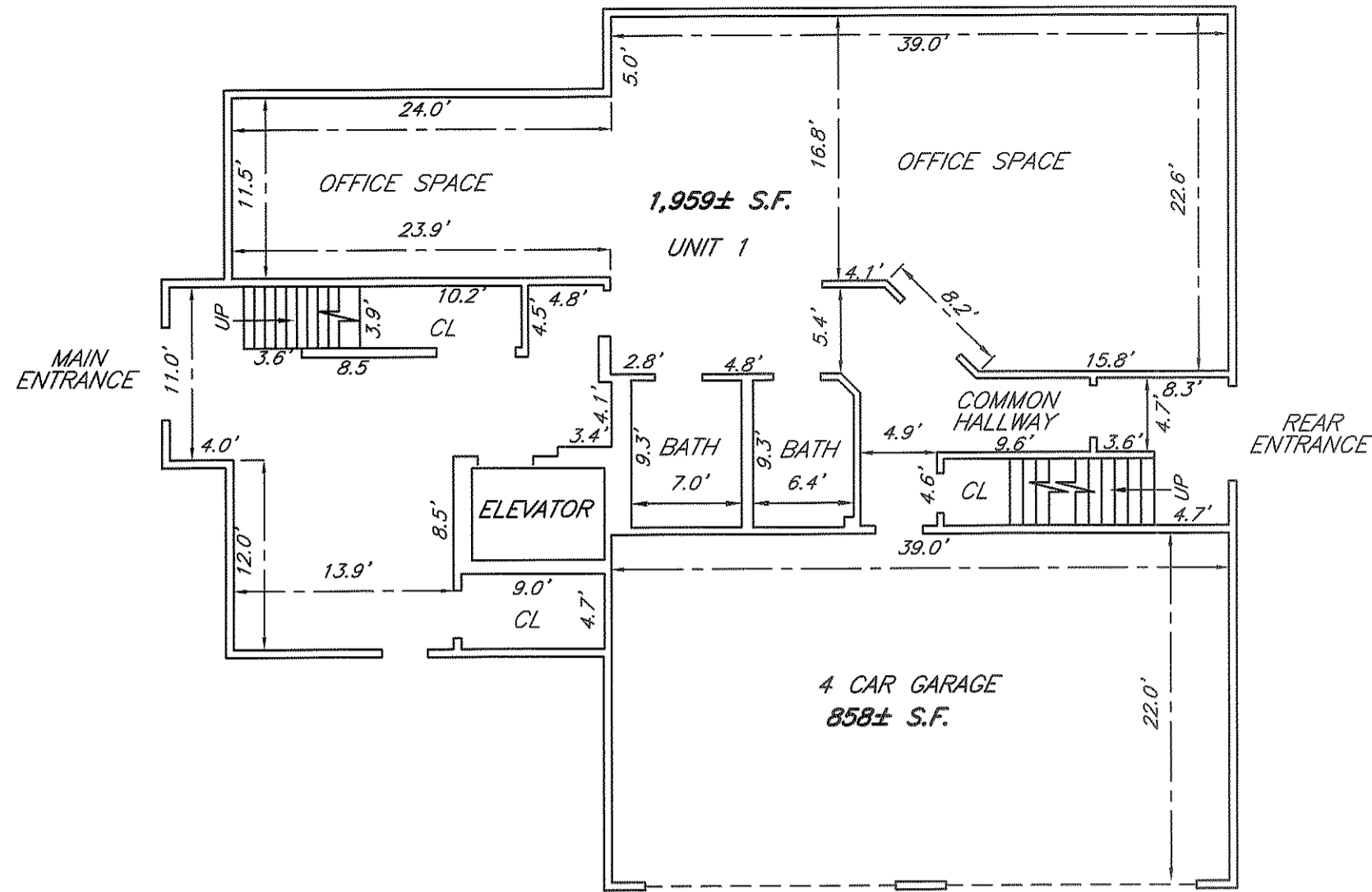


RECEIVED AND ENTERED
 MIDDLESEX NORTH REGISTRY OF DEEDS
 PLAN BOOK 236 PLAN 135
 SHEET 1 OF 3
 DATE: November 8, 2013
 BY: *[Signature]*



FIRST FLOOR

I CERTIFY THAT I HAVE CONFORMED
 WITH THE RULES AND REGULATIONS
 OF THE REGISTERS OF DEEDS IN
 PREPARING THIS PLAN.

HAYES ENGINEERING, INC.

Condominium Unit Plan in WILMINGTON, MASS.

"THE COURTYARD AT WILMINGTON COMMONS CONDOMINIUM"

Hayes Engineering, Inc.
 Civil Engineers & Land Surveyors
 603 Salem Street
 Wakefield, MA 01880

Telephone: 781.246.2800
 Facsimile: 781.246.7596
 www.hayeseng.com

Hayes

Scale: 1" = 10'

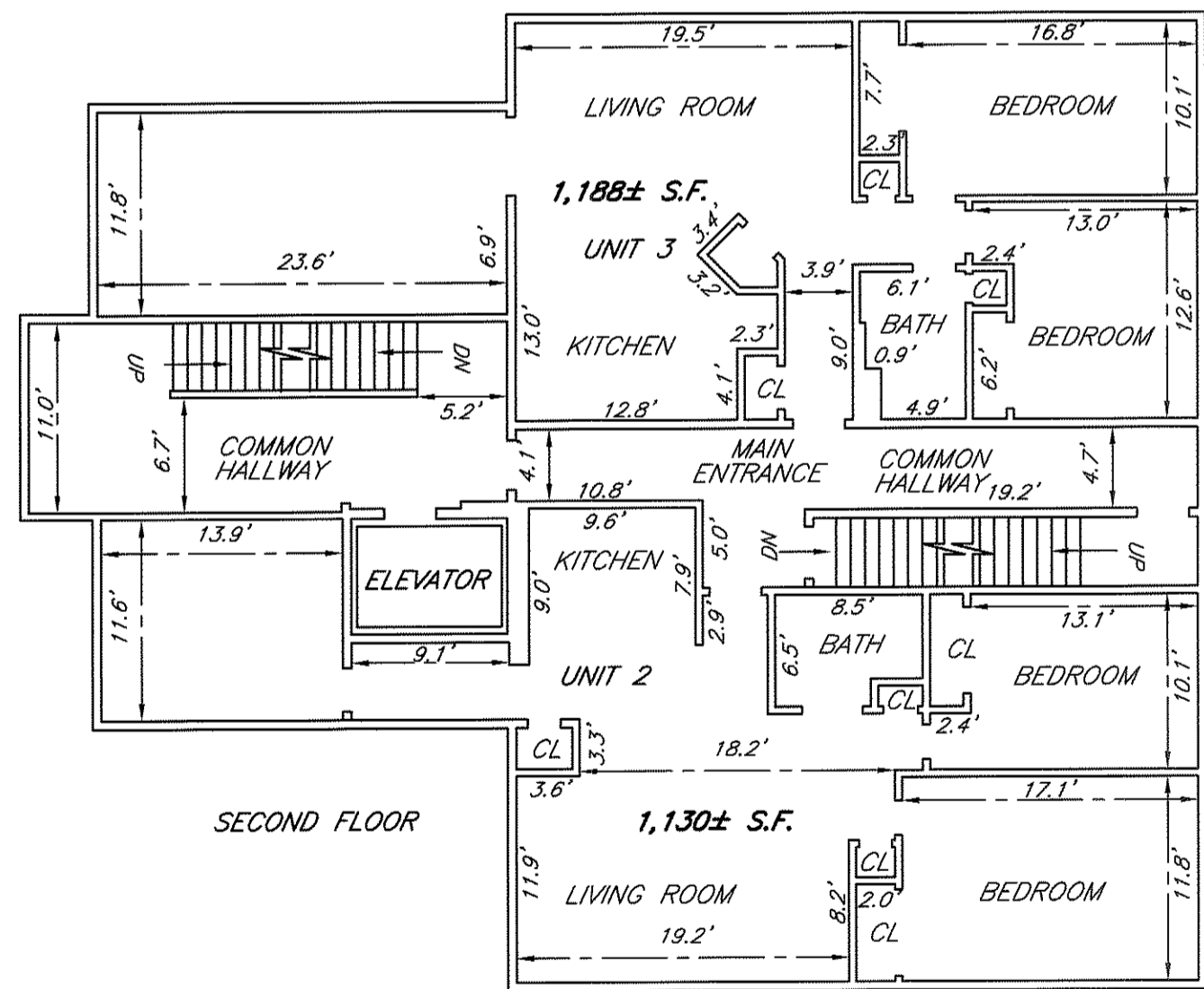
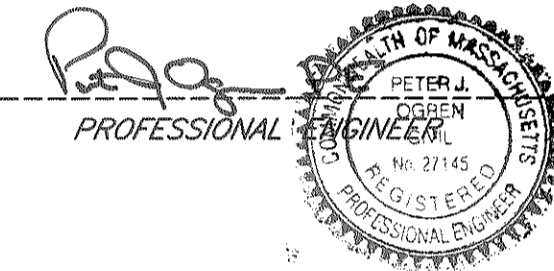


August 6, 2008

Showing Building A Containing
 Units 1, 2, 3, 4 & 5, Phase I

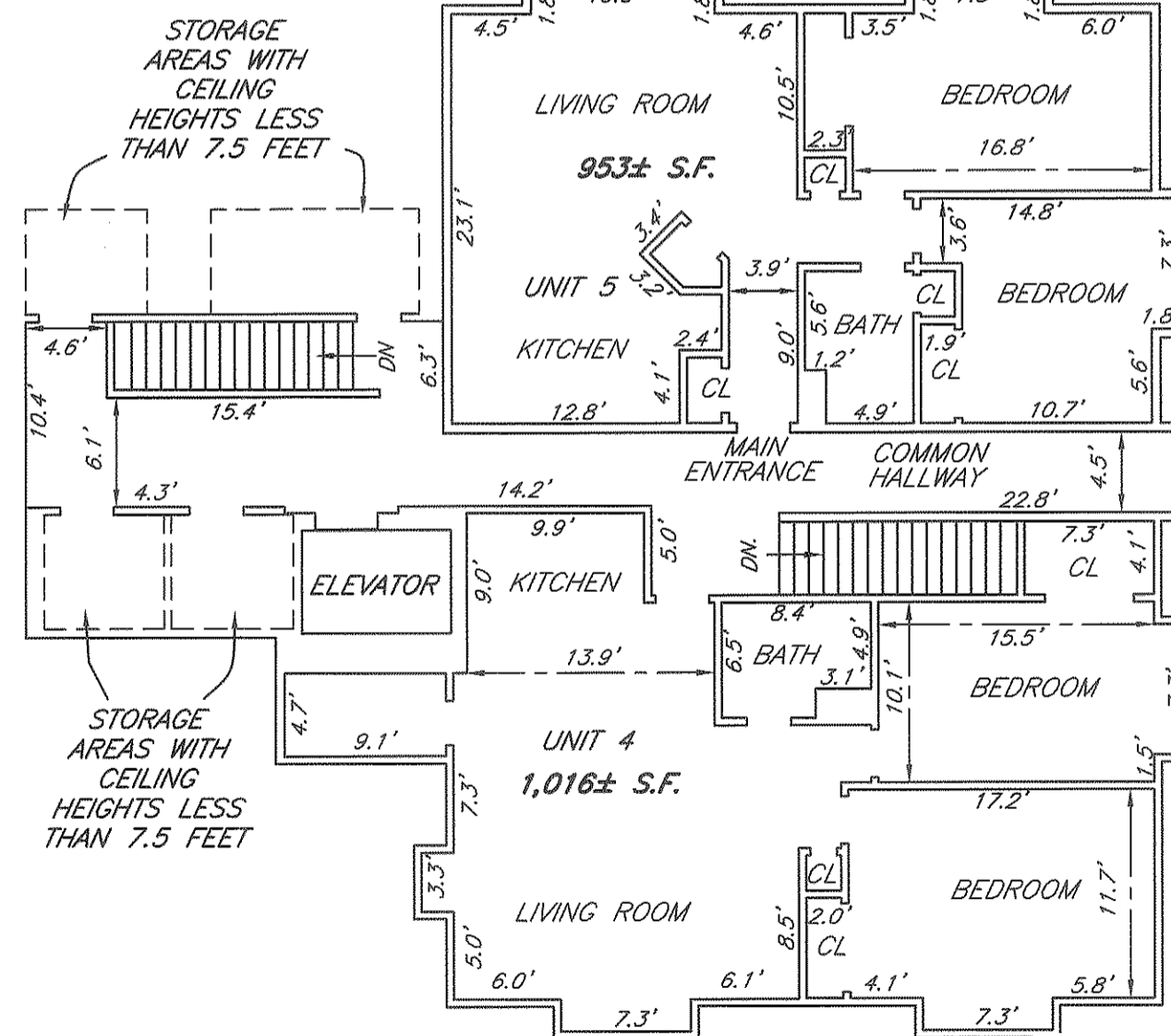
I HEREBY CERTIFY THAT THIS PLAN FULLY AND ACCURATELY DEPICTS
 THE UNIT DESIGNATIONS AND LAYOUT OF UNITS 1, 2, 3, 4 & 5, THEIR
 LOCATIONS, DIMENSIONS, APPROXIMATE AREAS, MAIN ENTRANCES AND
 IMMEDIATE COMMON AREAS TO WHICH THE UNIT HAS ACCESS, AS BUILT
 AT BUILDING A AT "THE COURTYARD AT WILMINGTON COMMONS
 CONDOMINIUM", PHASE I.

DATE: August 6, 2008



SECOND FLOOR

SECOND FLOOR



THIRD FLOOR

UNIT 1	
LEVEL	AREA
FIRST FLOOR	1,959 S.F.
TOTAL AREA	1,959± S.F.

UNIT 2	
LEVEL	AREA
SECOND FLOOR	1,130± S.F.
TOTAL AREA	1,130± S.F.

UNIT 3	
LEVEL	AREA
SECOND FLOOR	1,188± S.F.
TOTAL AREA	1,188± S.F.

UNIT 4	
LEVEL	AREA
THIRD FLOOR	1,016± S.F.
TOTAL AREA	1,016± S.F.

UNIT 5	
LEVEL	AREA
THIRD FLOOR	953± S.F.
TOTAL AREA	953± S.F.

NOTE:

- 1.) FLOOR AREAS DO NOT INCLUDE STAIRCASES, FIREPLACES, OR AREAS WITH A CEILING HEIGHT LESS THAN 7.5 FEET.
- 2.) FIELD MEASUREMENTS COMPLETED JULY 28, 2008.

RECEIVED AND ENTERED
 MIDDLESEX NORTH REGISTRY OF DEEDS
 PLAN BOOK 236 PLAN 135
 SHEET 2 OF 3
 DATE: November 8, 2013

Condominium Unit Plan in WILMINGTON, MASS.

"THE COURTYARD AT WILMINGTON COMMONS CONDOMINIUM"

Hayes Engineering, Inc.
 Civil Engineers & Land Surveyors
 603 Salem Street
 Wakefield, MA 01880

Telephone: 781.246.2800
 Facsimile: 781.246.7596
 www.hayeseng.com

Scale: 1" = 10'



March 20, 2009

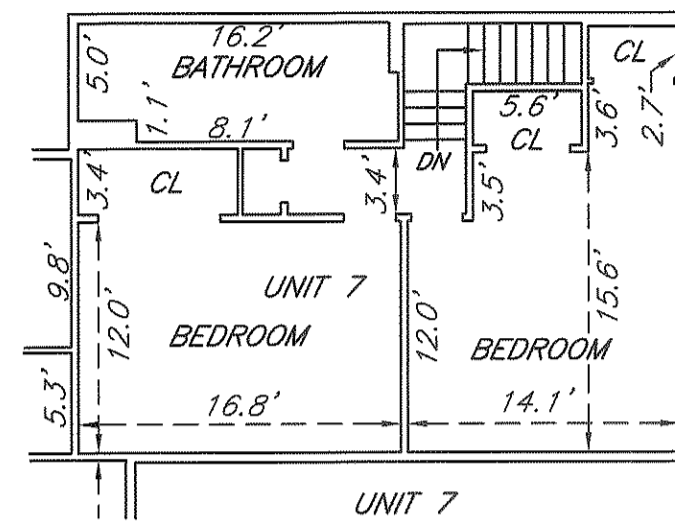
Showing Building B Containing Units 6, 7 & 8, Phase II

I CERTIFY THAT I HAVE CONFORMED
 WITH THE RULES AND REGULATIONS
 OF THE REGISTERS OF DEEDS IN
 PREPARING THIS PLAN.

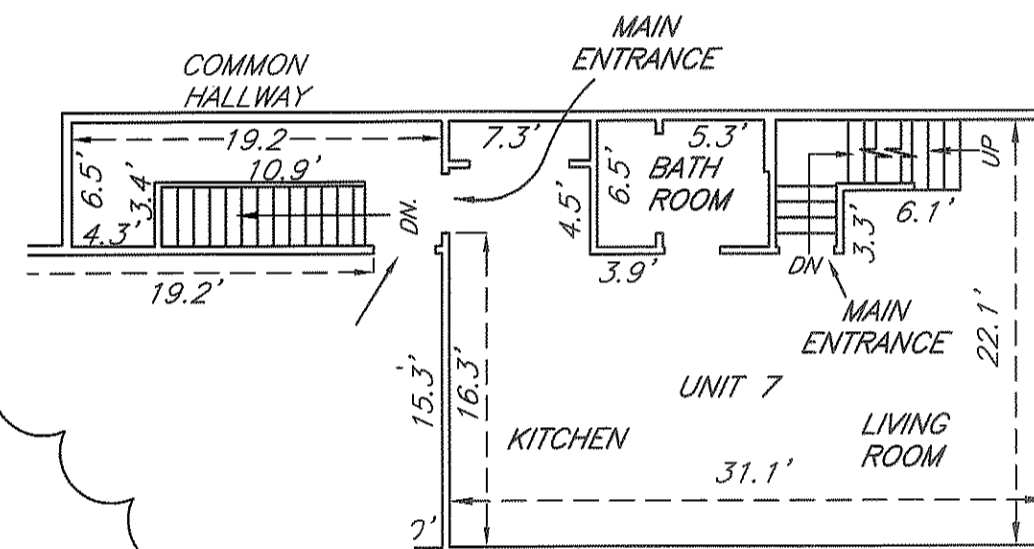
HAYES ENGINEERING, INC.

I HEREBY CERTIFY THAT THIS PLAN FULLY AND ACCURATELY DEPICTS THE
 UNIT DESIGNATIONS AND LAYOUT OF UNITS 6, 7 & 8, THEIR LOCATIONS,
 DIMENSIONS, APPROXIMATE AREAS, MAIN ENTRANCES AND IMMEDIATE
 COMMON AREAS TO WHICH THE UNIT HAS ACCESS, AS BUILT AT BUILDING B
 AT "THE COURTYARD AT WILMINGTON COMMONS CONDOMINIUM", PHASE II.

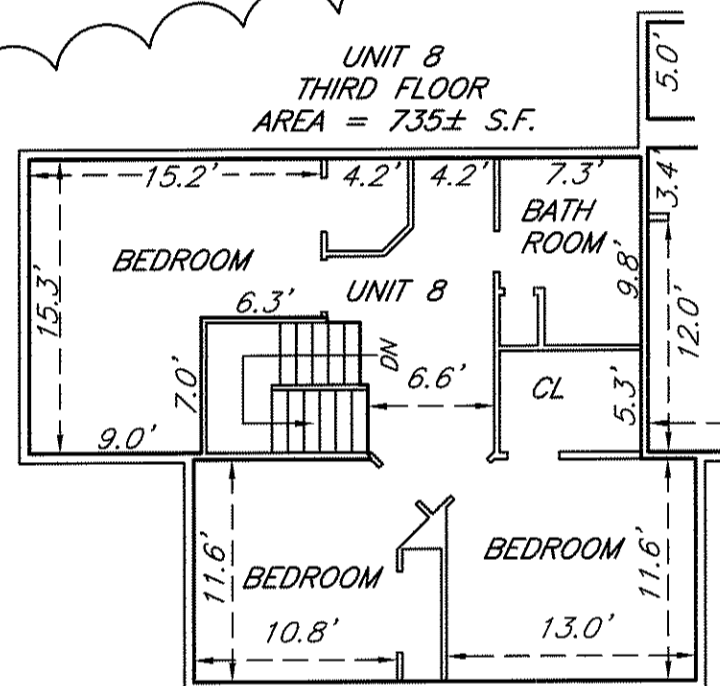
DATE: March 20, 2009



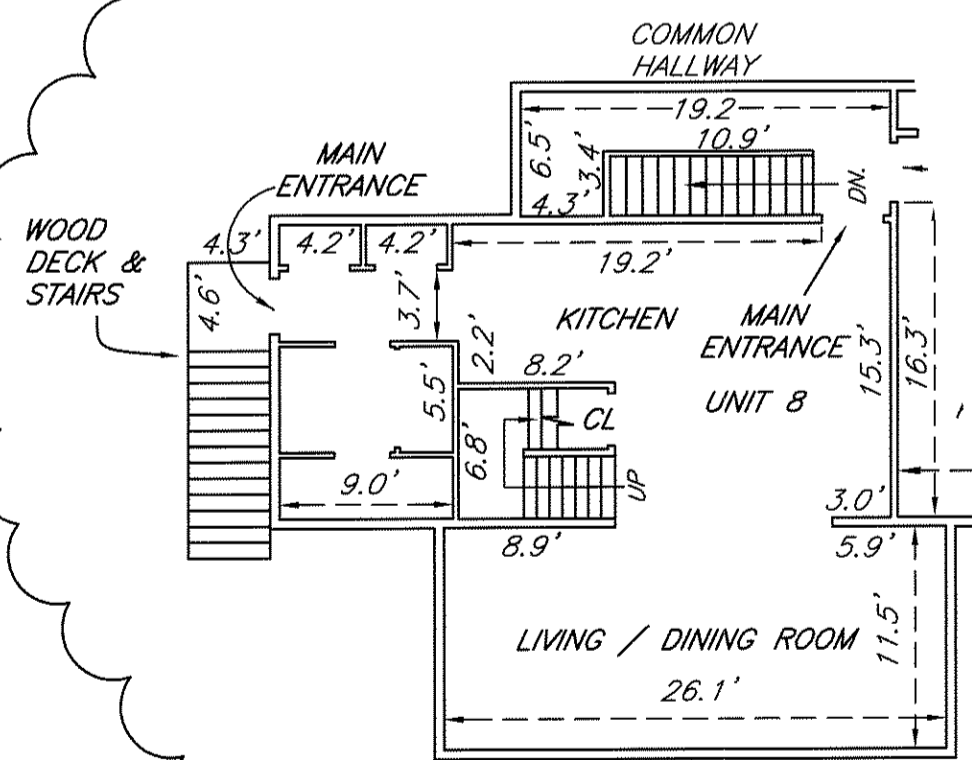
UNIT 7
 THIRD FLOOR
 AREA = 646± S.F.



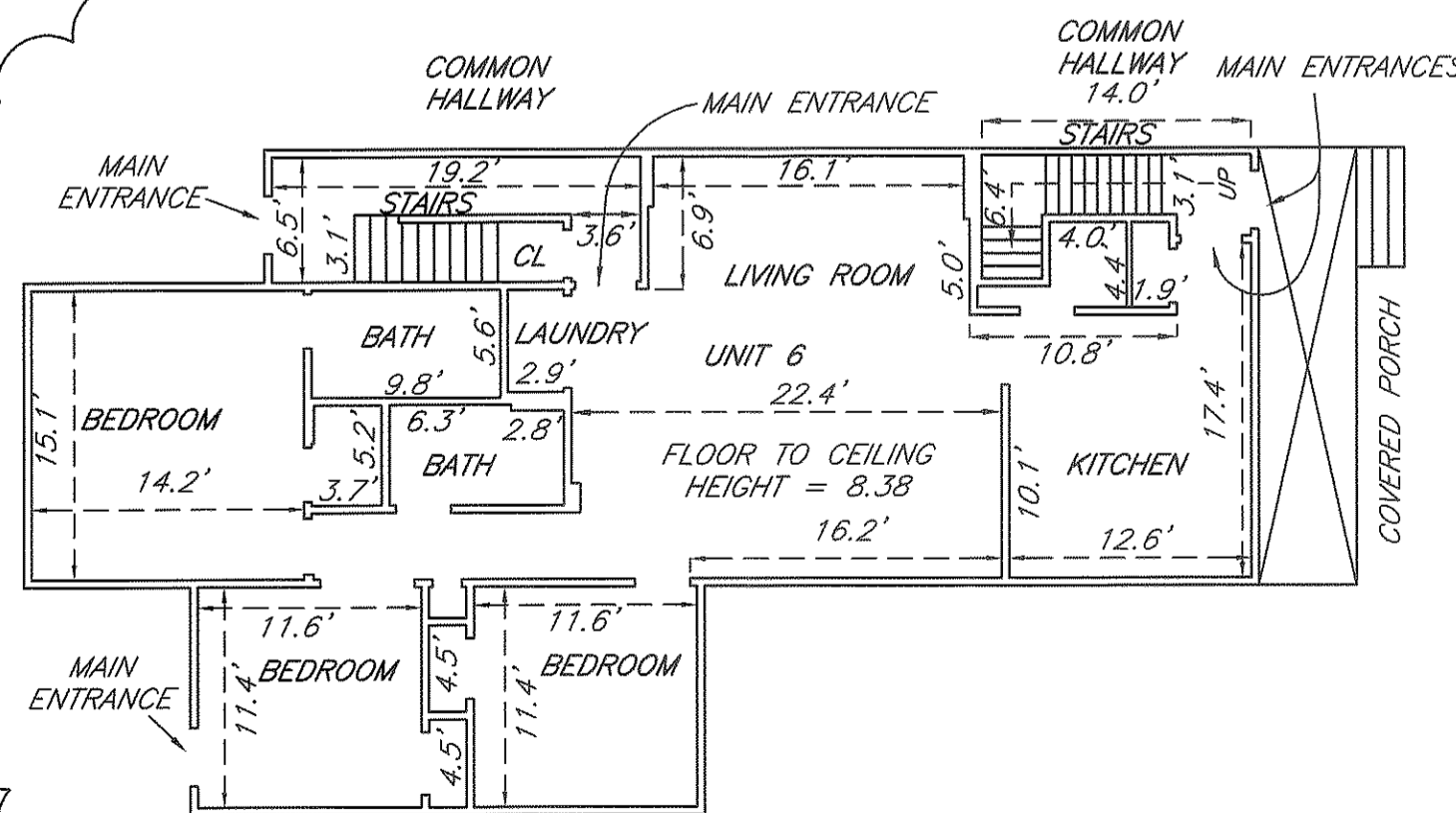
UNIT 7
 SECOND FLOOR
 AREA = 638± S.F.



UNIT 8
 THIRD FLOOR
 AREA = 735± S.F.

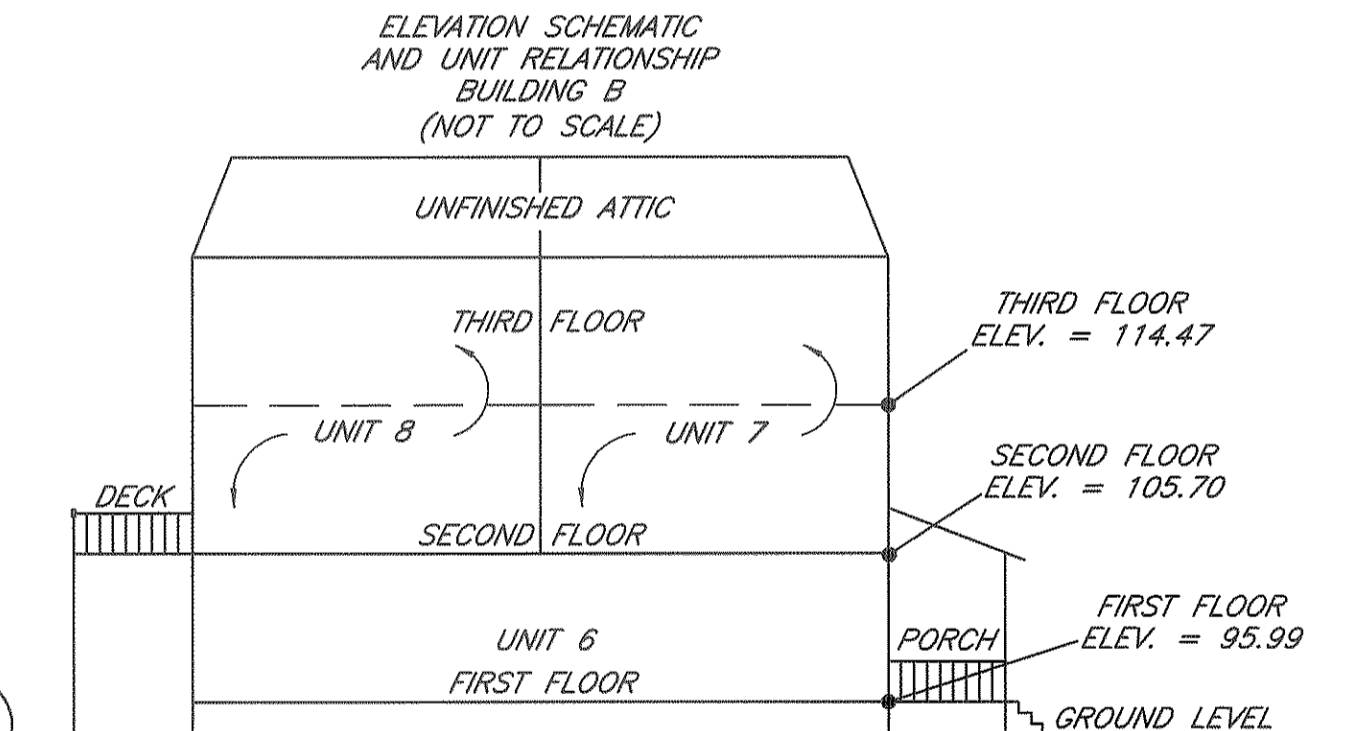


UNIT 8
 SECOND FLOOR
 AREA = 735± S.F.



UNIT 6
 AREA = 1,412± S.F.

UNIT 7 & 8 ARE LOCATED
 DIRECTLY ABOVE UNIT 6



UNIT 6	
LEVEL	AREA
FIRST FLOOR	1,412± S.F.
TOTAL AREA	1,412± S.F.

UNIT 7	
LEVEL	AREA
SECOND FLOOR	638± S.F.
THIRD FLOOR	646± S.F.
TOTAL AREA	1,284± S.F.

UNIT 8	
LEVEL	AREA
SECOND FLOOR	735± S.F.
THIRD FLOOR	735± S.F.
TOTAL AREA	1,470± S.F.

NOTE:

- FLOOR AREAS DO NOT INCLUDE STAIRCASES, FIREPLACES, OR AREAS WITH A CEILING HEIGHT LESS THAN 7.5 FEET.
- FIELD MEASUREMENTS COMPLETED MARCH 16, 2009.

RECEIVED AND ENTERED
 ESSEX NORTH REGISTRY OF DEEDS
 PLAN BOOK 236 PLAN 135
 SHEET 3 OF 3
 DATE: November 8, 2013

Condominium Unit Plan in WILMINGTON, MASS.

"THE COURTYARD AT WILMINGTON COMMONS CONDOMINIUM"

Hayes Engineering, Inc.
 Civil Engineers & Land Surveyors
 603 Salem Street
 Wakefield, MA 01880

Telephone: 781.246.2800
 Facsimile: 781.246.7596
 www.hayeseng.com

Hayes

Scale: 1" = 10'

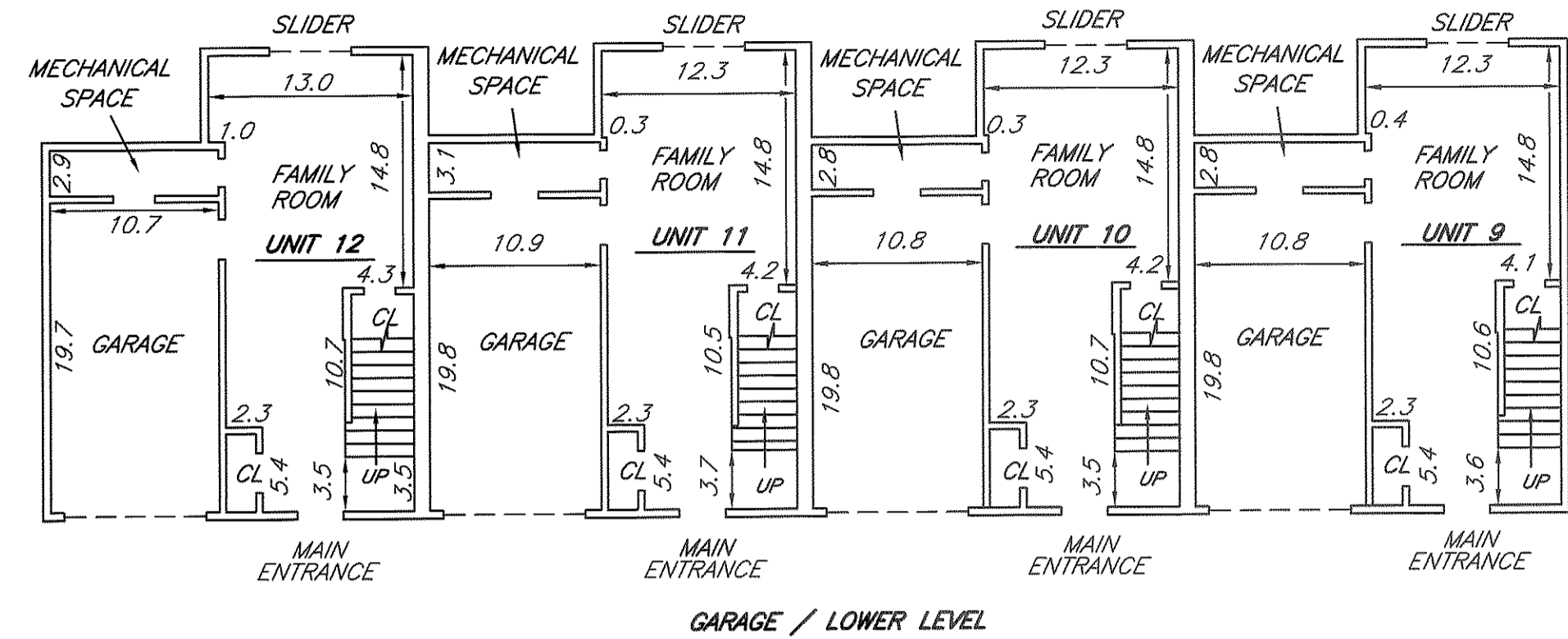


August 14, 2008

Showing Building C Containing Units 9, 10, 11 & 12, Phase III

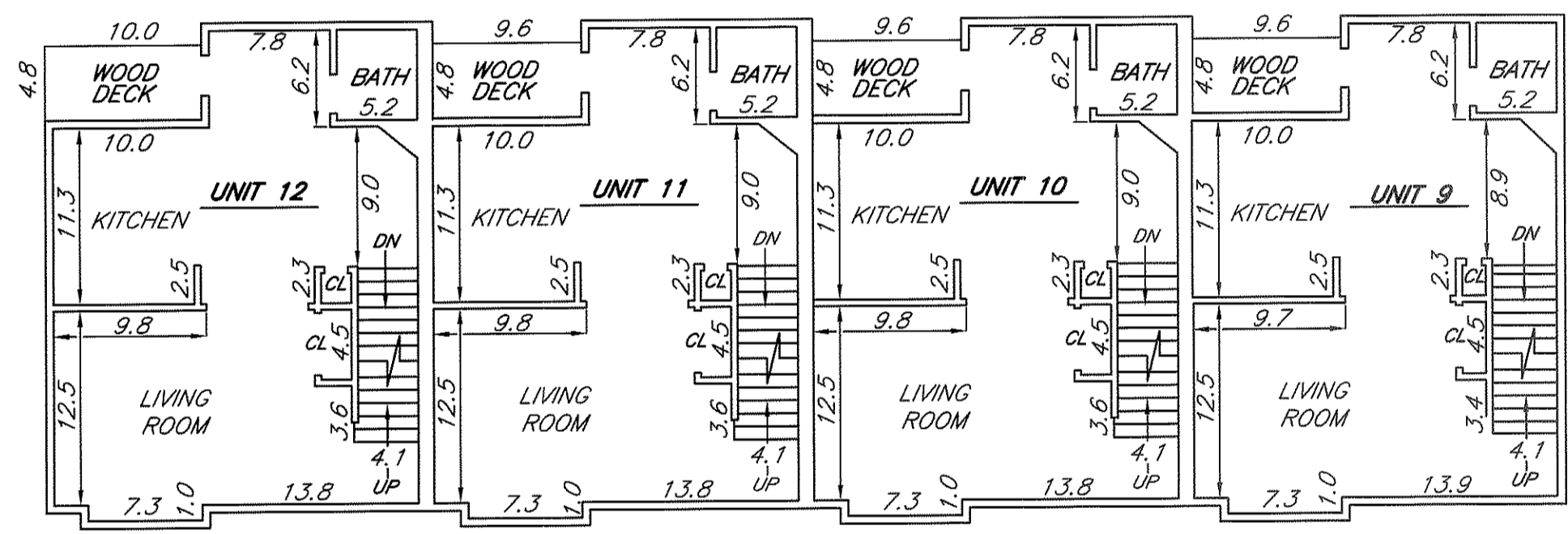
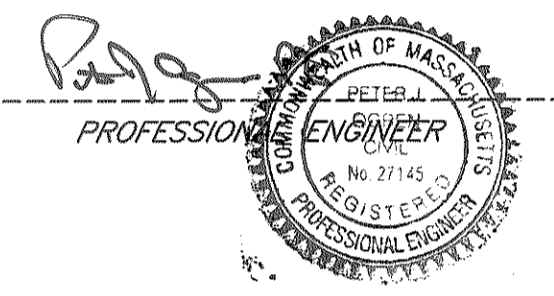
I CERTIFY THAT I HAVE CONFORMED
 WITH THE RULES AND REGULATIONS
 OF THE REGISTERS OF DEEDS IN
 PREPARING THIS PLAN.

HAYES ENGINEERING, INC.



I HEREBY CERTIFY THAT THIS PLAN FULLY AND ACCURATELY DEPICTS
 THE UNIT DESIGNATIONS AND LAYOUT OF UNITS 9, 10, 11 & 12, THEIR
 LOCATIONS, DIMENSIONS, APPROXIMATE AREAS, MAIN ENTRANCES AND
 IMMEDIATE COMMON AREAS TO WHICH THE UNIT HAS ACCESS, AS BUILT
 AT BUILDING C AT "THE COURTYARD AT WILMINGTON COMMONS
 CONDOMINIUM", PHASE III.

DATE: August 14, 2008



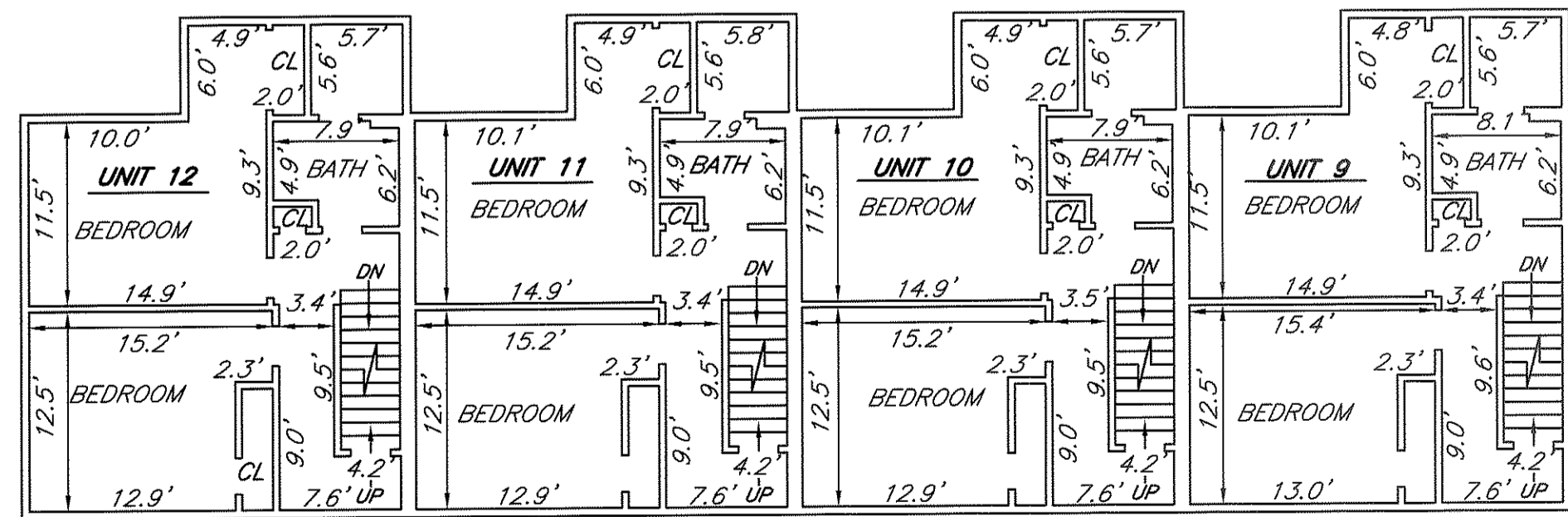
FIRST FLOOR

UNIT 12	
LEVEL	AREA
GARAGE	210± S.F.
LOWER LEVEL	304± S.F.
FIRST FLOOR	605± S.F.
SECOND FLOOR	602± S.F.
LOFT	190± S.F.
TOTAL AREA	1,911± S.F.

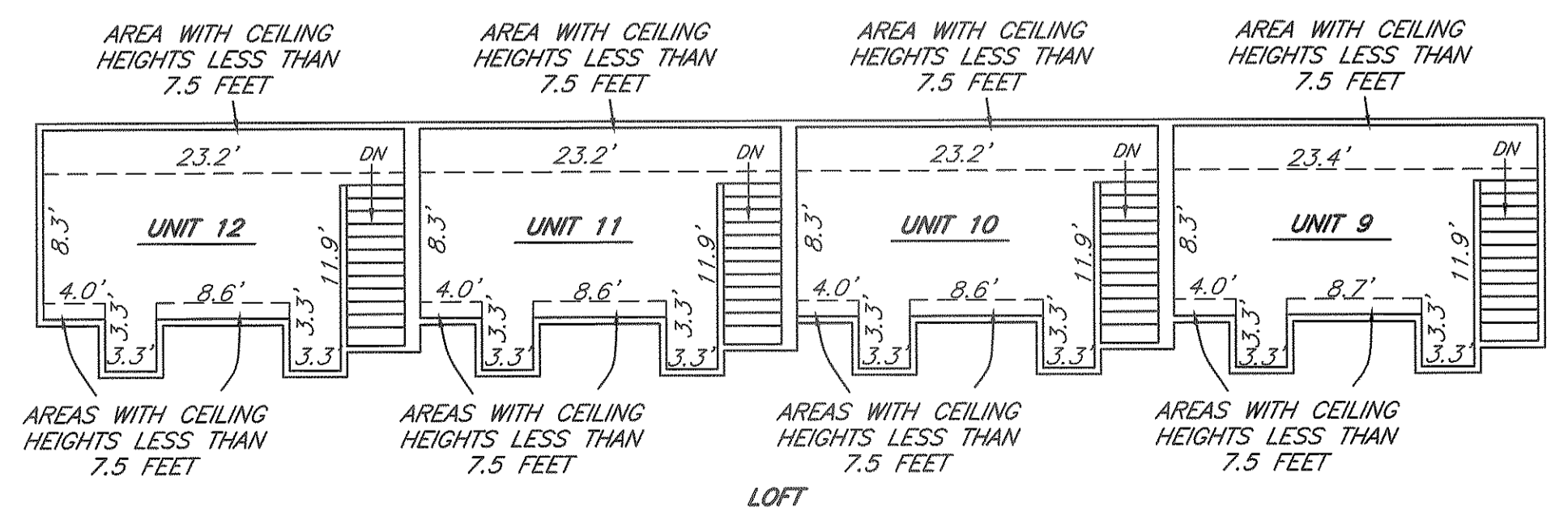
UNIT 10	
LEVEL	AREA
GARAGE	213± S.F.
LOWER LEVEL	306± S.F.
FIRST FLOOR	604± S.F.
SECOND FLOOR	602± S.F.
LOFT	190± S.F.
TOTAL AREA	1,915± S.F.

UNIT 11	
LEVEL	AREA
GARAGE	214± S.F.
LOWER LEVEL	307± S.F.
FIRST FLOOR	605± S.F.
SECOND FLOOR	602± S.F.
LOFT	190± S.F.
TOTAL AREA	1,918± S.F.

UNIT 9	
LEVEL	AREA
GARAGE	214± S.F.
LOWER LEVEL	306± S.F.
FIRST FLOOR	601± S.F.
SECOND FLOOR	604± S.F.
LOFT	192± S.F.
TOTAL AREA	1,917± S.F.



SECOND FLOOR



LOFT

NOTE:

- 1.) FLOOR AREAS DO NOT INCLUDE STAIRCASES, FIREPLACES, OR AREAS WITH A CEILING HEIGHT LESS THAN 7.5 FEET.
- 2.) FIELD MEASUREMENTS COMPLETED JULY 28, 2008.